

## **Animal TWS Wireless Headphone**

Materials: ABS Plastic

Bluetooth version: 5.0

Bluetooth distance: 10meters

Headphone battery capacity:35mA

Storage box battery capacity: 300 mA

Playing time:4hours

Recorder box charges:2-3hours

Box size: 5.5\*4.9CM

**Think:**  
How to design a joyful music player?



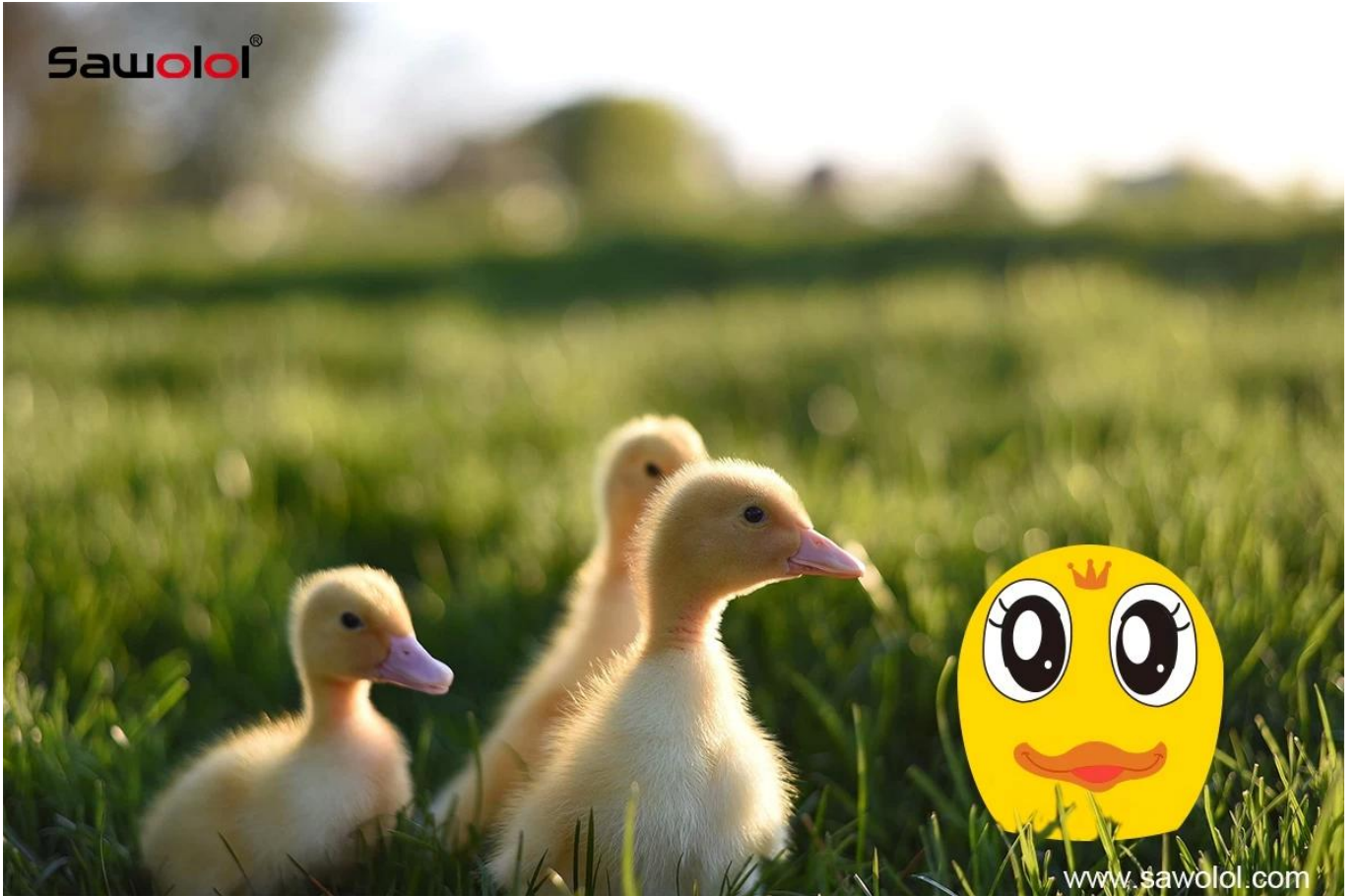


**Draft Drawing :**  
A joyful image.





Sawolol<sup>®</sup>



[www.sawolol.com](http://www.sawolol.com)

Sawolol<sup>®</sup>



[www.sawolol.com](http://www.sawolol.com)

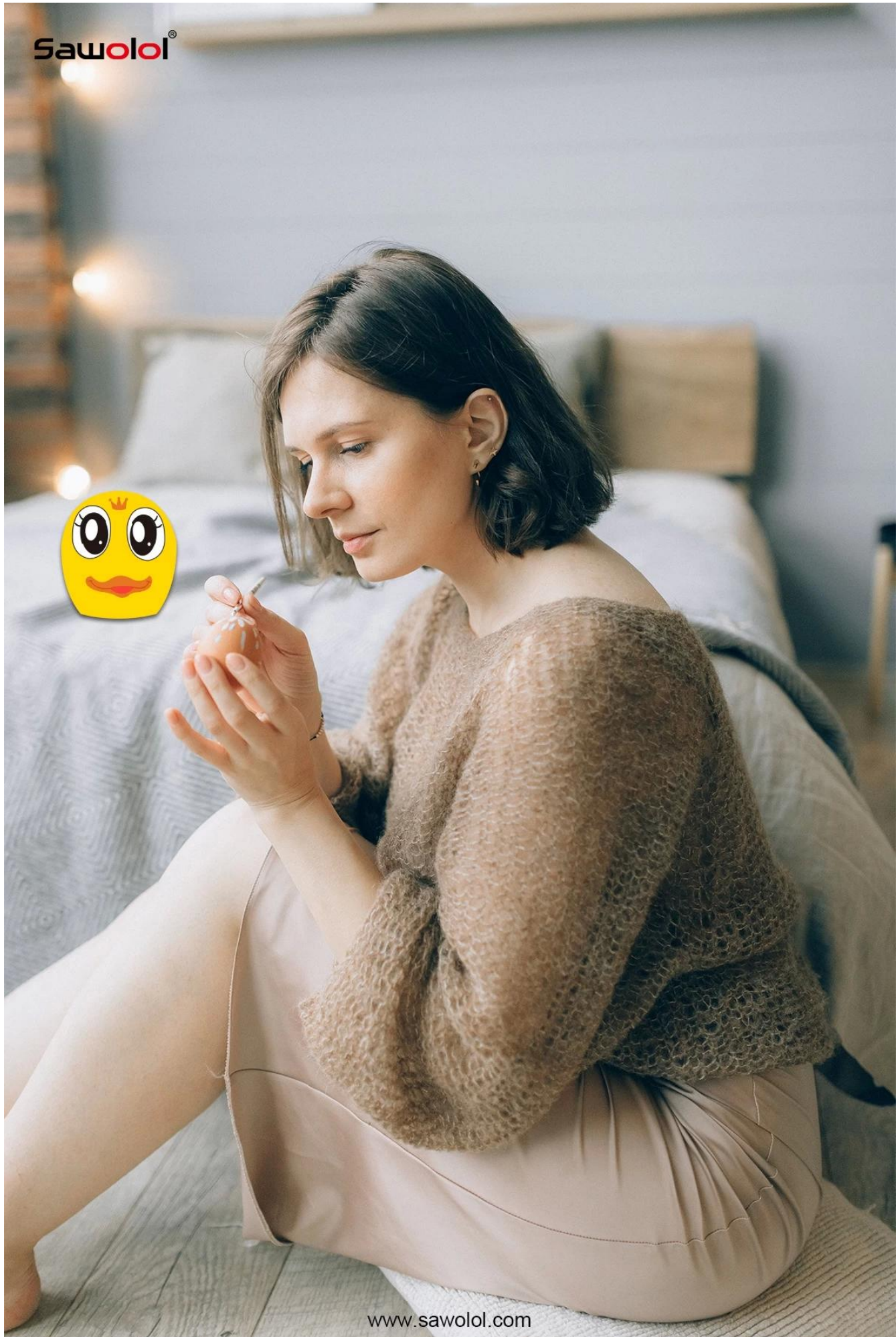


Sawolol®





Sawolol®



[www.sawolol.com](http://www.sawolol.com)

## **FAQ:**

### **About Company:**

#### **- How long your company deal with electronic business? Are you manufacture ?**

Sawolol is design□development□manufacture company over 15 years experience and we specialize in trendy fashion electronics products with added value to consumer electronic market.

#### **- Which factory audit you did ?**

Our manufacture already did factory audit of Sedex 4P, BSCI, ISO9001 with a professional quality control system.

#### **- Which market is your main business market?**

Our main business market is Europe, U.S.A, Asia, South America etc.

#### **- Do your company has your own brand or not?**

We have our own brand SAWOLOL for our patented design smart audio section and we have special partner service for our brand agent in each local market for long time business cooperation.

#### **- Which payment term for your company?**

Normally it is T/T in advance (30% deposit before order confirmation and the balance before shipment ) for mass order or LC at sight for big quantity order; For sample order with small amount , it is ok to transfer the payment via PayPal,Western union or Alipay as well.

#### **- What Fair your company will attend each year?**

Normally we will attend HKTDC Hong Kong Electronics Fair in both Spring and Autumn Edition and CES Fair etc. , please keep contact with us for our fair updated information via our website or our mail [info@sawolol.com](mailto:info@sawolol.com) , thanks!

### **About [tws bluetooth earphones](#) :**



**- Can you do OEM/ODM tws bluetooth earphones ?**

We have a strong experienced in OEM/ODM customized audio products with R & D team, Product Design Team who can provide 3 new design products quarterly with unique design and high quality function to our business partner.

**- Which certificate for your tws bluetooth earphones ?**

Our tws bluetooth earphones is comply with electronics products testing standard of CE,ROSH, FCC ,BQB etc.

**- What is lead time for normal order?**

Sample Time: 3-7 working days for normal samples;

Mass Order Time: 25-35 days after sample approval for daily orders.

**- Which package for the tws bluetooth earphones ?**

Normally it is our standard gift box and it is OK to do customized package box as per requirements.

**- How long time for the tws bluetooth earphones warranty?**

The warranty of tws bluetooth earphones is one year from the date of shipping for the goods under normal use excluding batteries and other expendable accessories.