

Bluetooth 無線イヤホン Bluetooth 無線イヤホン Bluetooth
Bluetooth 無線イヤホン Bluetooth 無線イヤホン Bluetooth
Bluetooth: Bluetooth 無線イヤホン Bluetooth
Bluetooth 無線イヤホン Bluetooth 7 Bluetooth 無線イヤホン

TWS Bluetooth 無線イヤホン

Bluetooth 無線イヤホン: V5.0

Bluetooth-Bluetooth イヤホン

Bluetooth: 3 Bluetooth * 1

Bluetooth 無線イヤホン: 20Hz-20KHz

Bluetooth イヤホン : 4 Bluetooth イヤホン

Bluetooth 無線イヤホン イヤホン: 1 Bluetooth

Bluetooth イヤホン Bluetooth: Bluetooth 無線イヤホン

Bluetooth イヤホン Bluetooth: Bluetooth-Bluetooth 無線イヤホン イヤホン

Bluetooth 無線イヤホン: Bluetooth 無線イヤホン イヤホン, Bluetooth, Bluetooth 無線イヤホン

Bluetooth イヤホン Bluetooth: 15.10 x7.05x5.70 Bluetooth

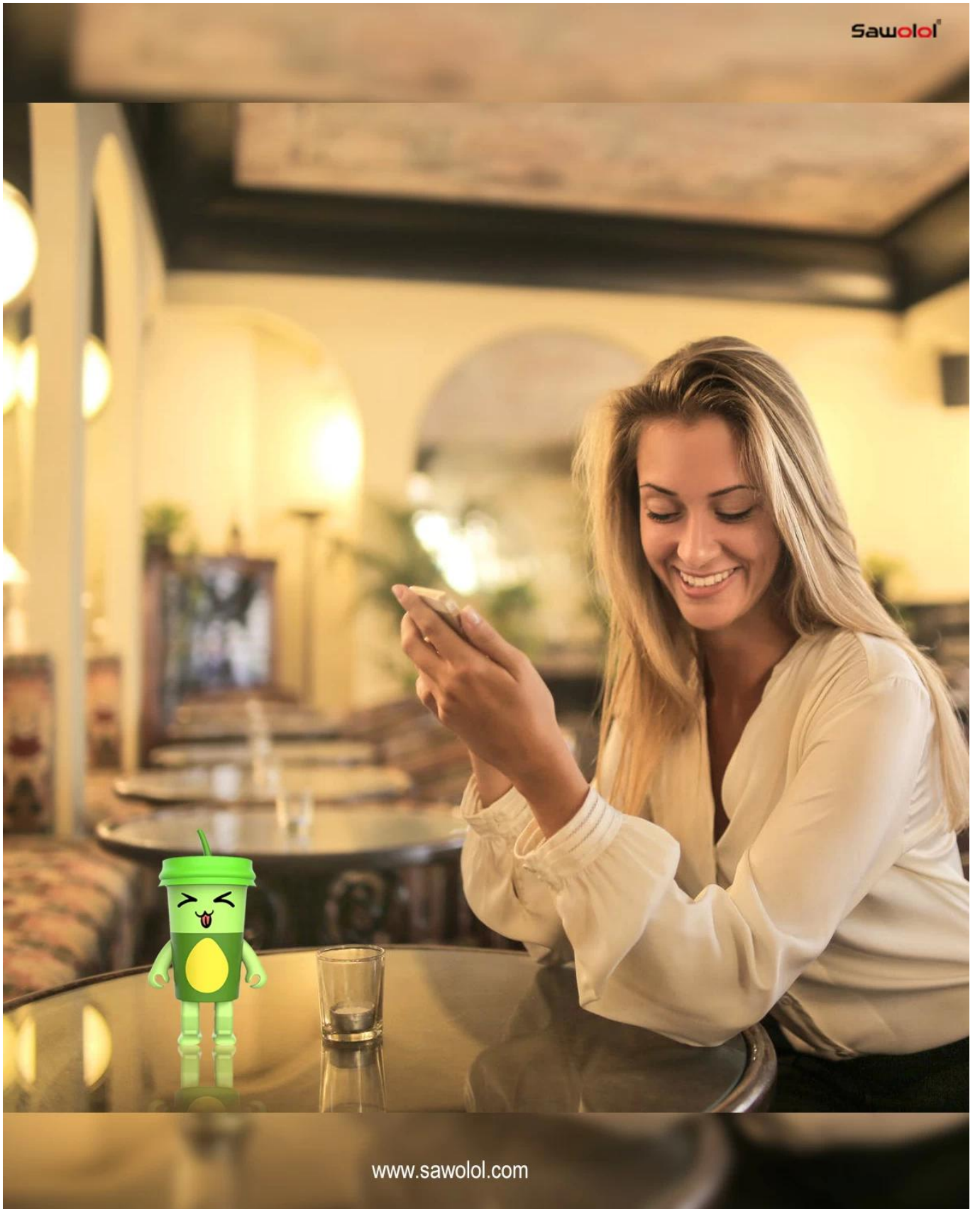
Bluetooth Bluetooth8518210000



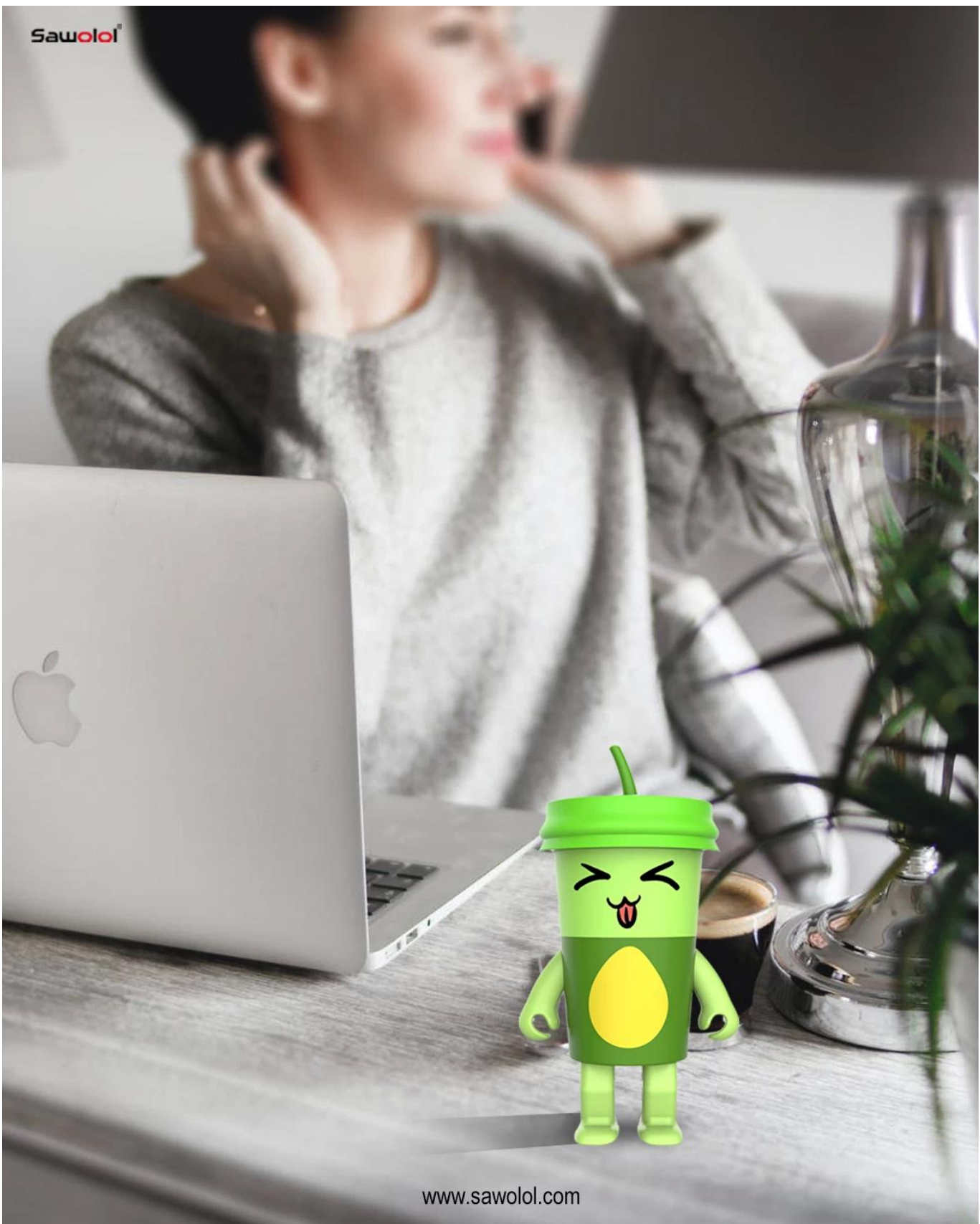
Sawolol®



www.sawolol.com



Sawolol[®]



www.sawolol.com







Wireless



Hands-free



3W



LED Light



Dancing



TWS



www.sawolol.com

□□□□□□ □□□□□□:

□□□□□□ □□ □□□□ □□□□:

Q: How do I get CE, ROHS, FCC, BQB and other certifications? Can you provide the necessary documents and procedures?

- Can you provide the necessary documents and procedures for CE, ROHS, FCC, BQB and other certifications?

A: Yes, we can provide the necessary documents and procedures for CE, ROHS, FCC, BQB and other certifications. The lead time is 3-7 days.

Q: How long does it take to get CE, ROHS, FCC, BQB and other certifications? Can you provide the necessary documents and procedures?

- Can you provide the necessary documents and procedures for CE, ROHS, FCC, BQB and other certifications?

A: Yes, we can provide the necessary documents and procedures for CE, ROHS, FCC, BQB and other certifications. The lead time is 25-35 days.

- Can you provide the necessary documents and procedures for CE, ROHS, FCC, BQB and other certifications?

A: Yes, we can provide the necessary documents and procedures for CE, ROHS, FCC, BQB and other certifications. The lead time is 25-35 days.

Q: How long does it take to get CE, ROHS, FCC, BQB and other certifications? Can you provide the necessary documents and procedures?

- Can you provide the necessary documents and procedures for CE, ROHS, FCC, BQB and other certifications?

A: Yes, we can provide the necessary documents and procedures for CE, ROHS, FCC, BQB and other certifications. The lead time is 25-35 days. We also provide BLE (Bluetooth Low Energy) and iOS 11 compatibility. For Apple, we provide Android 6.0 compatibility.

- Can you provide the necessary documents and procedures for CE, ROHS, FCC, BQB and other certifications?

A: Yes, we can provide the necessary documents and procedures for CE, ROHS, FCC, BQB and other certifications. The lead time is 25-35 days. We also provide BLE (Bluetooth Low Energy) and iOS 11 compatibility. For Apple, we provide Android 6.0 compatibility.

- Can you provide the necessary documents and procedures for CE, ROHS, FCC, BQB and other certifications?

A: Yes, we can provide the necessary documents and procedures for CE, ROHS, FCC, BQB and other certifications. The lead time is 25-35 days. We also provide BLE (Bluetooth Low Energy) and iOS 11 compatibility. For Apple, we provide Android 6.0 compatibility.

- Can you provide the necessary documents and procedures for CE, ROHS, FCC, BQB and other certifications?

A: Yes, we can provide the necessary documents and procedures for CE, ROHS, FCC, BQB and other certifications. The lead time is 25-35 days. We also provide BLE (Bluetooth Low Energy) and iOS 11 compatibility. For Apple, we provide Android 6.0 compatibility.

Q: How do I get CE, ROHS, FCC, BQB and other certifications? Can you provide the necessary documents and procedures?

A: Yes, we can provide the necessary documents and procedures for CE, ROHS, FCC, BQB and other certifications. The lead time is 25-35 days. We also provide BLE (Bluetooth Low Energy) and iOS 11 compatibility. For Apple, we provide Android 6.0 compatibility. Contact us at info@sawolol.com for more information!